

MAIN PARTS

The Volanti Plan Station ships in three main parts:

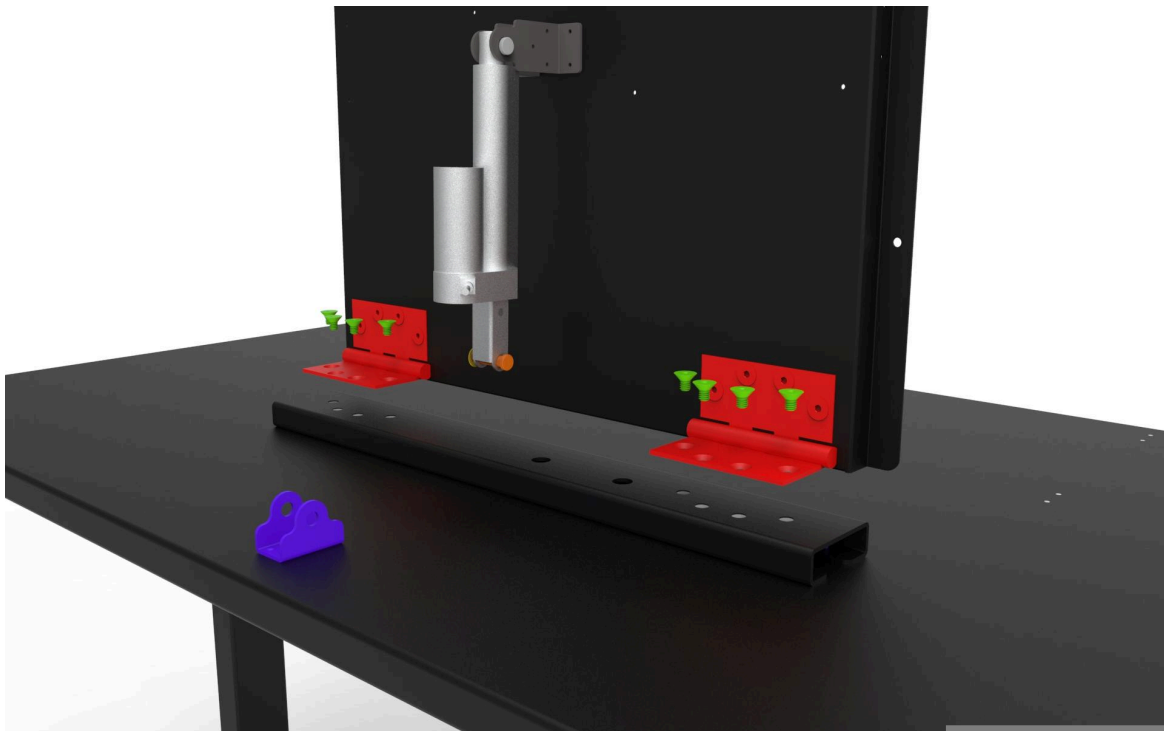
1. Table
2. Mounting bracket with actuator
3. Touch display

All screws, pins, and clips are provided.

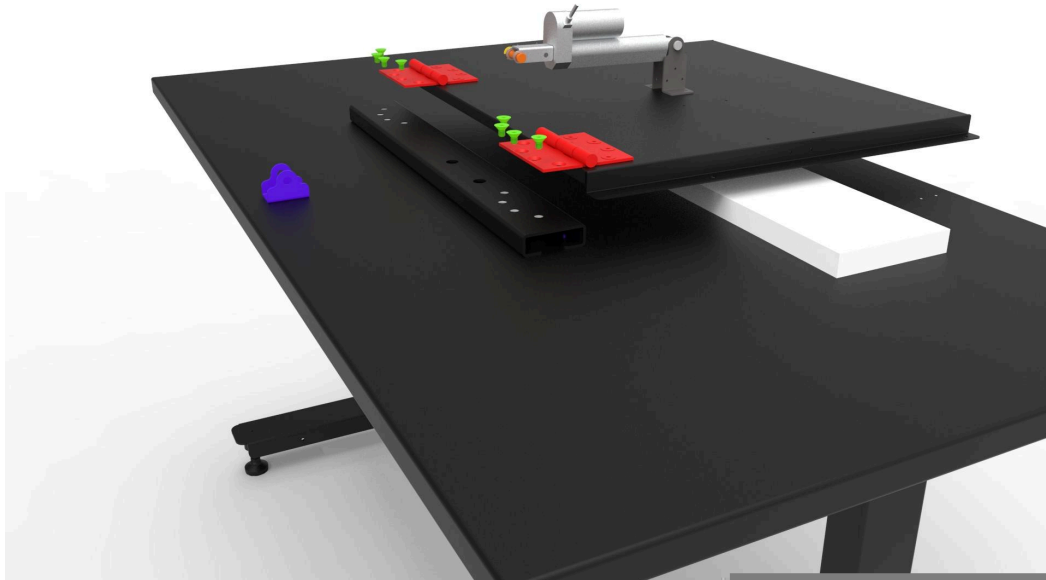
ASSEMBLY STEPS

Mounting Plate

Attach the mounting plate with the actuator attached to the table (note, all colors are for illustration only). Use a piece of packing foam to protect the table surface during this step. Screws are provided to attach the hinges to the back of the mounting plate.



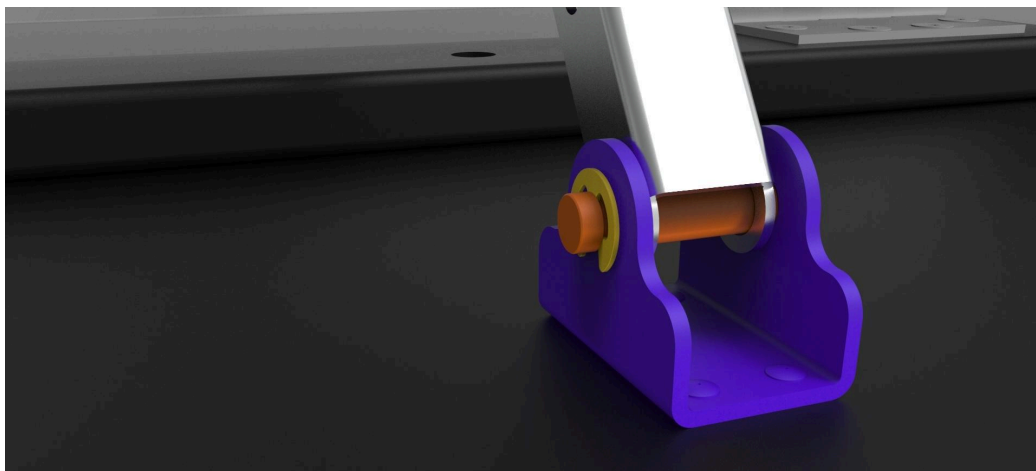
It may be easier with the parts lying down, see next page.



The white block in the image is packing material used for protection

Secure The Actuator

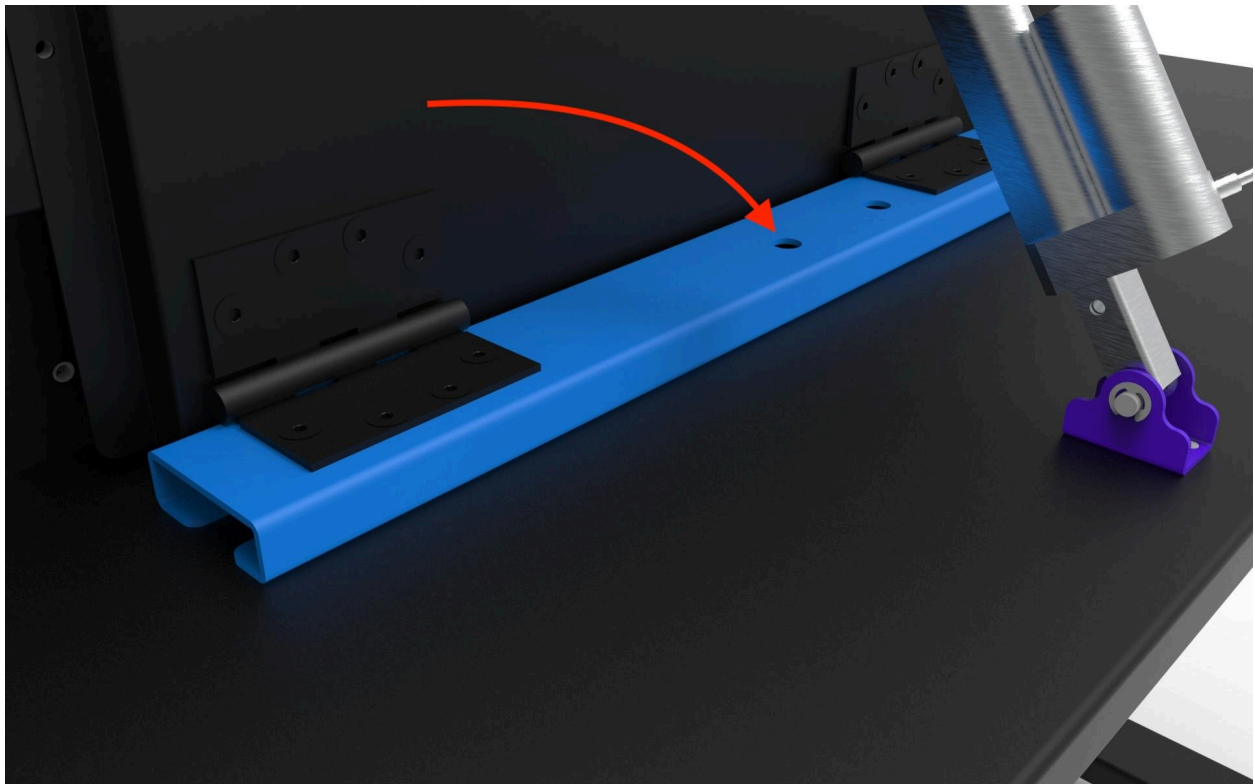
When the mounting plate is attached, connect the bottom of the actuator to the bracket on the table (colored purple in the image below). The securing pin (orange in the illustration) and retaining clip (yellow) are provided.



Connect The Actuator Cable

The cable from the actuator should pass through the hole in the middle of the support bracket's round hole, as shown. This cable should be connected to the loose cable under the tabletop.

With this connected together with connection to the AC power, the paddles on the front of the table, to adjust height and tilt, will operate.



Attach the Touchscreen Display

To attach the monitor to the mounting plate it is important to remove the lower VESA mount screws from the monitor, and position the upper screws about ¼" out, this will allow the monitor to be hung on the mounting plate and secured.

See **video**: <https://vimeo.com/927752057/b2f42f3ff3?share=copy>