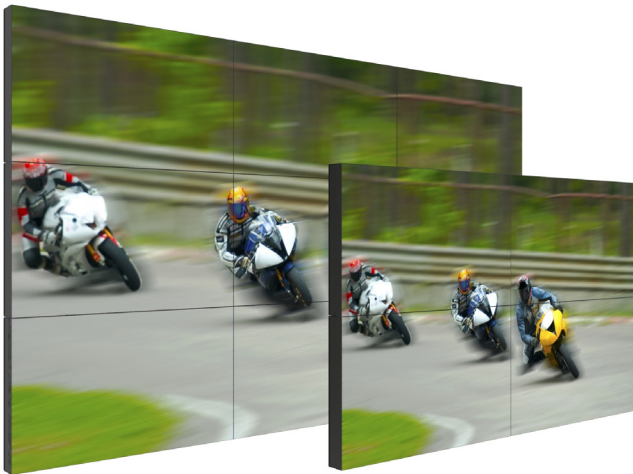




55" Extreme Narrow Bezel



Advanced Display Technology

- A bezel of only 0.9mm (a dime is 1.35mm thick)
- Bright, 700nit, with direct LED backlight
- Anti-glare 44% haze display surface
- 4K input with internal scaling for the highest resolution
- 1.06 Billion Colors (10 bit) (CIE1931)

Advanced Video Wall Display

- Connect to video wall processor or scale direct input
- Panel to panel matching
- Video inputs: HDMI, Displayport, DVI, VGA
- Linked - control all panels as a group via IR remote
- Ethernet, RS-232, IR control options



Display Type	Direct LED backlit LCD	Warranty	3 years
Display Resolution	1920 x 1080 Full-HD with 4K input	Certifications	TUV safety / FCC Class A
Module Size	47.7" x 26.8" x 4.3" (with handles) (1211.8mm x 680.4mm x 109.2mm)	Weight	53lbs (24kg)
Bezel Size	0.9 mm each side	Shipping Weight	65lbs, (30kg)
Brightness	700nit (cd/m ²)	Shipping Carton Size	53" x 10" x 33" 1346 x 254 x 838 mm
Contrast	4000:1		1346 x 254 x 838 mm
Colors	16.7 million	Handling	4 handles per video wall display
Viewing Angle	89/89/89/89°	Mounting Format	Industry standard VESA 400mm x 400mm (Chief, Peerless, Premier, Crimson etc.)
Orientation	Landscape / Portrait / Other		
Video Inputs	HDMI, DisplayPort, DVI, VGA		
Video Wall Configurations	Landscape, Portrait, Mosaic		
IR Control Module	Controls display settings		
Power Consumption	700nit : 150 W		
Operation	Designed for 24/7/365 operation		
Calibration Utility	Volanti calibration utility software for Microsoft Windows 10.		

Specifications subject to change without notice

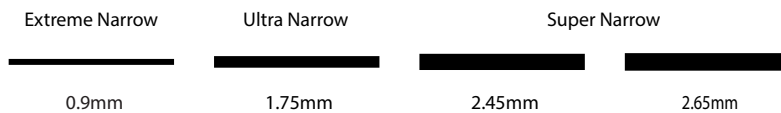
Order Numbers

55" Extreme Narrow Bezel (700nit) VD-5528-0A00-0100

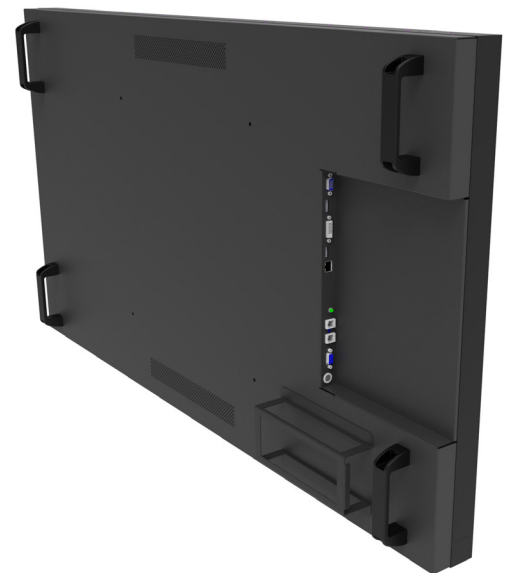
Bezel Width Comparison

The following shows a comparison of bezel widths available for video wall displays.

The current state of the art is the extremely narrow bezel representing a significant improvement over the ultra narrow and super narrow bezel displays.



Note: Sizes are relative, not absolute as the viewing device will impact the size.



Shown without mounting brackets

Volanti Displays

18440 Technology Drive
 Morgan Hill, CA 95037, USA

Call Us On: **+1.408.500.3500**

Design and Final Assembly in USA

Volanti Displays © 2017 | www.volantidisplays.com

July 2017 v1.0